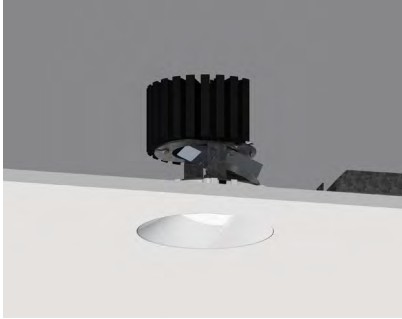
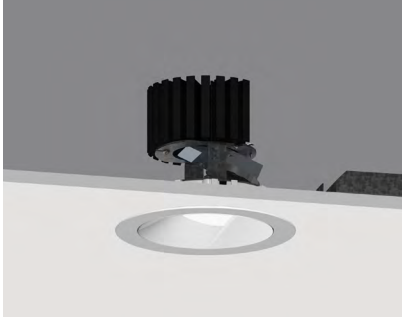


4" ProTools DL Wall Wash

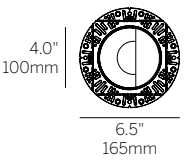
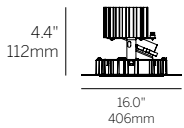
Round Wall Wash Cover



Recessed Plaster Trim

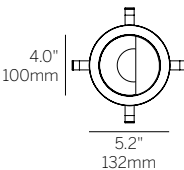
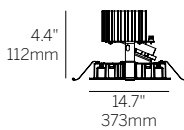


Recessed Bezel Trim



Cut Out: Ø 4.75" (120mm)

Recessed Plaster Trim (RPT)



Cut Out: Ø 4.75" (120mm)

Recessed Bezel Trim (RBT)

Ordering Information

Model	Fixation	Power ^{1,2}	CRI/CCT	Driver ⁴	Lens	Finish	Options
WG-100RPTDLWW	RPT RBT	L M H XH	927 930 935 940	X SW D010 DALI LE	RSC RSO	W G	LP CP IC WL

Luminaire

- 4" round downlight with 2" light aperture.
- 0.7" regressed aperture / lens providing asymmetric beam distribution optimized for even illumination of vertical surfaces.
- High-angle illumination.
- Luminaire and driver installed and maintained from below the ceiling.
- Minimum of 5.5" (127mm) ceiling void is required to install the fixture from below the ceiling (remodelling).
- Modular interchangeability throughout the entire ProTools range of products.

Fixation

- RPT = Recessed Plaster Trim
- RBT = Recessed Bezel Trim

Power^{1,2}

- L = Low Power, 5.7W @ 350mA
- M = Mid Power, 8.4W @ 500mA
- H = High Power, 12.0W @ 700mA
- XH = Extra High Power, 17.8W @ 1050mA

CRI/CCT³

- 90+ CRI (Low/Medium/High/Extra High)
- 927 = 2700K, (720/999/1344/1884 lm)
- 930 = 3000K, (775/1075/1447/2027 lm)
- 935 = 3500K, (775/1075/1447/2027 lm)
- 940 = 4000K, (830/1151/1549/2171 lm)

Driver⁴

- X = Driver ordered separately
- SW = Switched/NON DIM
- D010 = 0-10/1-10V DIM
- DALI = DALI DIM
- LE = Leading-Edge DIM

Lens

- RSC = Regressed Satin Clear
- RSO = Regressed Satin Opal

Finish

- W = White
- G = Gray

Options⁵

ProTools downlights require no additional options kits for remodel & new construction

- LP = Landing Pan
- CP = Chicago Plenum Housing
- IC = IC/NC Housing
- WL = Wet Location

¹ Other lumen packages available, consult factory.

² See LED data sheet for delivered lumens.

³ Wattage shown does not include power supplies/drivers. System wattage adds 10-20%.

⁴ See power supply page for details.

⁵ To specify multiple options, select the appropriate grouped codes from the dropdown e.g. LP-WL.